



HANGCHA GROUP CO., LTD.

Factory site: 666 Xiangfu Road,
Hangzhou, Zhejiang, China (311305)

Tel: +86-571-88926735 88926755
Fax: +86-571-88926789 88132890

sales@hcforklift.com www.hcforklift.com



Follow us on
Facebook



Follow us on
YouTube



Follow us on
WeChat



Download "Hangcha
Forklift" App



ISO45001:2018



ISO14001:2015



ISO9001:2015



HANGCHA trucks conform
to the European Safety
Requirements.

XE SERIES

ELECTRIC FORKLIFT TRUCK WITH
LITHIUM POWER

With capacity of 4,000 to 5,000kg

HANGCHA GROUP CO., LTD. reserves the right to make any changes without notice concerning colors, equipment, or specifications detailed in this brochure, or to discontinue individual models. The colors of trucks, delivered may differ slightly from those in brochures.

BECOME THE FORKLIFT MEETING YOUR DIFFERENT NEEDS.

ADVANCED PERFORMANCE ■

HIGH EFFICIENCY ■

COMFORT ■



■ OUTDOOR OPERATION ABILITY

■ ERGONOMICS

■ RELIABILITY

■ MAINTENANCE

XE SERIES ELECTRIC FORKLIFT TRUCK WITH LITHIUM POWER

Your reliable, powerful and connected working machine.

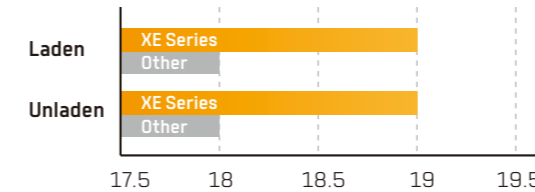
XE series standard lithium battery forklifts are quality products that are developed on the basis of the advantages of the dedicated lithium battery forklift structure and the permanent magnet synchronous motor technology. Inheriting the family design of electric forklifts, some key parts can also be used for internal combustion forklifts.



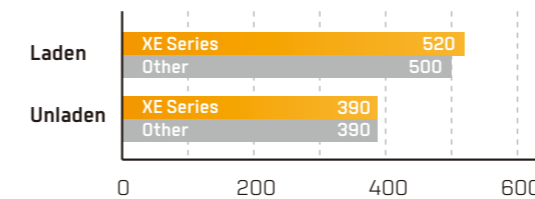
HIGH EFFICIENCY AND ENERGY SAVING

- With the efficient high-torque motor and high speed ratio speed reducer, upslope degree and acceleration performance are significantly improved.
- The walking motor and lifting motor are both equipped with air coolers to offer better heat dissipation and performance.
- An oil pump reducer is used in the oil pump for the first time to enable the lifting motor to have higher operation efficiency and less energy consumption.

5t load maximum travel speed [km/h]



5t load maximum lift speed [mm/s]



STYLISH EXTERIOR

- Inherit the family design of dedicated XH and XC series lithium battery forklifts.
- With a smooth and sturdy profile, the vehicle is compact, elegant, stylish and robust.



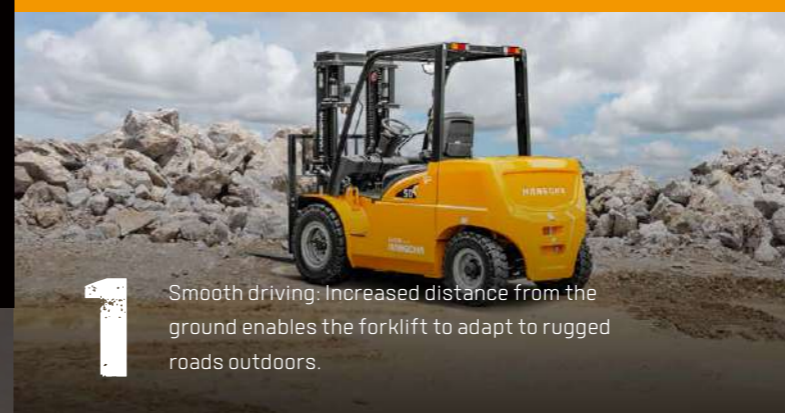
TAKE
ADVANTAGE
OF MORE POWER

With the **80V dual permanent magnet synchronous motor system** with higher power density, as well the highly fitted speed reducer, motors and electrical control, under the same operating conditions, compared with the traditional asynchronous motor model, the energy consumption is reduced by 15%-20%.

**15-20%
ENERGY SAVING**



ADAPTABILITY TO DIFFERENT SCENARIOS



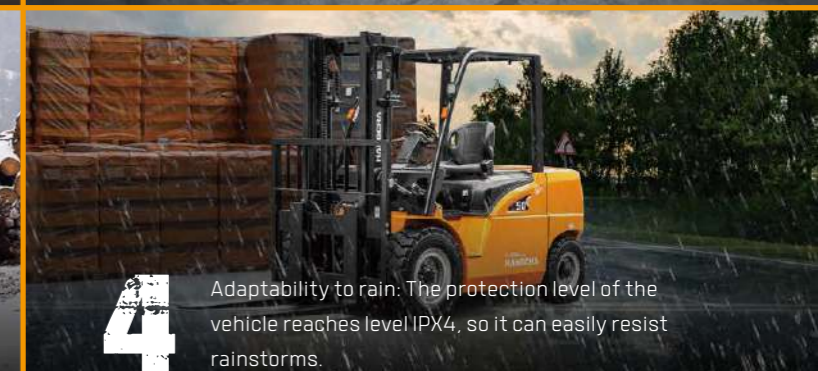
1 Smooth driving: Increased distance from the ground enables the forklift to adapt to rugged roads outdoors.



2 Flexible turning: With a small turning radius, the forklift can flexibly move in indoor environments such as cold stores (optional), etc.



3 Adaptability to cold weather: For the standard configuration, the battery is equipped with an electric heating module to ensure normal operation in cold weather.



4 Adaptability to rain: The protection level of the vehicle reaches level IPX4, so it can easily resist rainstorms.

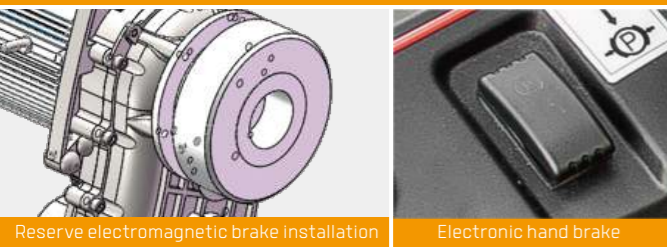


EXCELLENT VISION

Inheriting the advantages of lithium battery forklifts—wide view, large operation space and excellent ergonomic design.

EPB (Electric Parking Brake) (optional)

The gearbox reserves an installation position for electromagnetic brakes, which can be optionally equipped with an electronic handbrake for more comfortable use.



Reserve electromagnetic brake installation

Electronic hand brake



COMFORTABLE EXPERIENCE



Large diameter steering wheel for flexible steering and more effortless operation.



Increase the lever ratio to the control lever, resulting in less control force and more comfort.



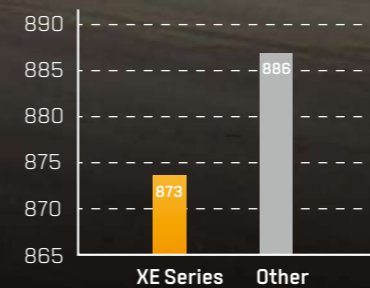
The color-screen instruments are designed to have graphical interfaces and display data clearly.

RELIABILITY AND DURABILITY

Having passed the standard verification for both electric forklifts and internal combustion forklifts where the test stringency is higher than that for internal combustion forklifts, the forklift is reliable and durable.



5t center of gravity comparison chart



Fully loaded rear axle load ratio (5t larger)



- The enhanced drive axle, speed reducer and internal combustion forklift mast, steering axle and large tires can meet the needs for use of internal combustion forklifts.
- The design of low center of gravity and high load allowance enables more stable operation.



Low center



Tires

EASY MAINTENANCE

Maintenance of the entire vehicle is convenient. The side door and front and rear bottom door can be removed without tools, and all maintenance parts are within easy reach.

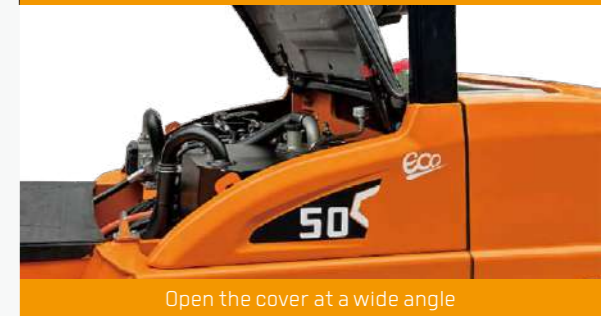


Battery roll out easily

Optional battery list

Capacity(Ah)	XE 4-5t	
80V/460Ah	●	EVE
80V/604Ah	☆	CATL
80V/560Ah	○	EVE
80V/608Ah	○	EVE
80V/840Ah	○	EVE
80V/906Ah	☆	CATL

Note: ● Battery; ○ Battery Opt; ☆ Same as XC series



Open the cover at a wide angle

Features

Color	Standard	Options
Yellow-black	●	
Other customized color		○
Particular market		
CE Standard		○
Cold storage environment		
-18°C/-30°C		○
Mast		
Standard duplex mast	●	
Configuration Table of the Mast		○
Fork and attachment		
Standard fork	●	
Fork arm carrier	●	
Load backrest	●	
Non-standard series fork		○
Various attachments		○
Tires		
Pneumatic tire (single)	●	
Pneumatic tire (dual)		○
Solid tire (single)		○
Solid tire (single)		○
Multiway valve		
Double multi-way valve	●	
Triple valve		○
Quadruple valve		○
Quintuple valve (4.0-5.0t)		○
Tiller		
Lifting and tilting level	●	
Thumb switch		○
Battery		
Standard lithium battery	●	
Large-capacity lithium battery		○
Quick-change lithium battery		○
Light		
LED head lamp	●	
Turn signal lamp	●	
LED rear combination lamp	●	
Common alarm lamp		○
Acoustic and optical alarm lamp		○
LED rear lamp		○
Blue light		○
Straight projection lamp		○
Horn		
Electric horn	●	
Reverse buzzer	●	
Right rear armrest with horn button		○
Smart module		
Jiachen smart module		○
Safety management module(F4)		○

Safety configuration	Standard	Options
Emergency power-off switch	●	
Fuse box	●	
Soft landing	●	
Reversing radar		○
OPS system		○
Fire extinguisher		○
Ascending buffering		○
Parking brake		
Mechanical handbrake	●	
EPB(Electric Parking Brake)		○
Service braking		
Hydraulic assisted braking	●	
Instrument rack space		
Smart color-screen instrument (speed mode selection)	●	
Combination switch	●	
Cigarette lighter		○
USB port		○
Electronic code lock (start by swiping a card)		○
Driving space		
Standard overhead guard	●	
Central rear view mirror	●	
Front windshield		○
PVC ceiling		○
Cab		○
Electric fan		○
Left and right rear view mirrors		○
Seat		
Standard seat	●	
Fully-suspended seat		○
Semi-suspended seat		○
Other standard configuration		
Drive and lifting controllers	●	
Driving and lifting motors	●	
Oil pump reducer	●	
Silent gear pump	●	
DC-DC converter	●	
Pedal pad	●	
Traction pin	●	
Integral stamped side panel and hood	●	